

Preliminary Technical Data

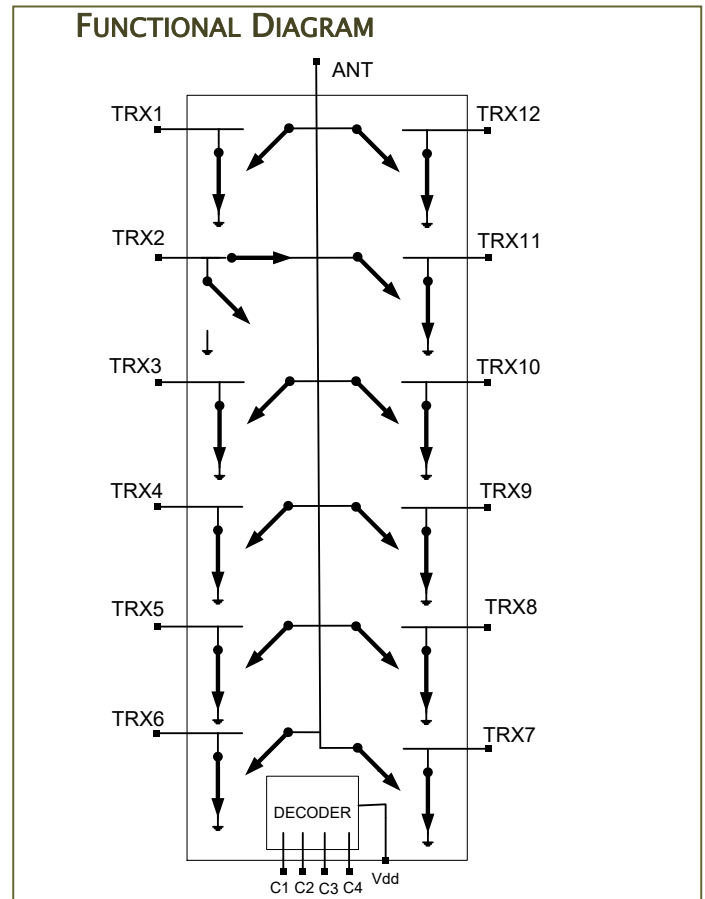
Features

- ☑ CMOS Single Pole Twelve Throw (SP12T) switch from 100 MHz to 3 GHz
- ☑ ESD protection on all ports
- ☑ Twelve TRX paths all interchangeable and all rated for up to 36dBm input power.
- ☑ Very Low Insertion Loss on all paths
- ☑ High Isolation to all other paths
- ☑ Very Low harmonic levels
- ☑ Very Low IMD Products
- ☑ Integrated decoder
- ☑ Single supply operation with no external capacitors required
- ☑ Available in die form for flip-chip assembly.

Description

The FE1C3505 is a low-cost CMOS single pole twelve throw (SP12T) switch operating from 100 MHz to 3 GHz. The switch can deliver a very low Insertion Loss of 0.32 dB at 900 MHz supporting low loss requirements for the transmit path and high sensitivity for the receive path.

For ease of use, and to save board space, the FE1C3505 integrates a decoder and operates from a single supply without the need for external capacitors.



The FE1C3505 is available in die form for flip-chip assembly. The switch is fabricated using a high performance CMOS process optimized for RF front-end applications.

This device is RoHS (Restriction of Hazardous Substances) compliant to EU Directive 2002/95/EC.

Further Information

Please contact sales@ferfics.com